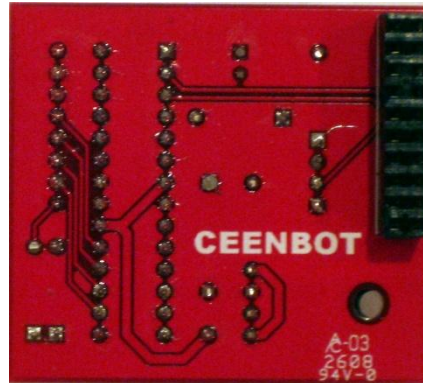
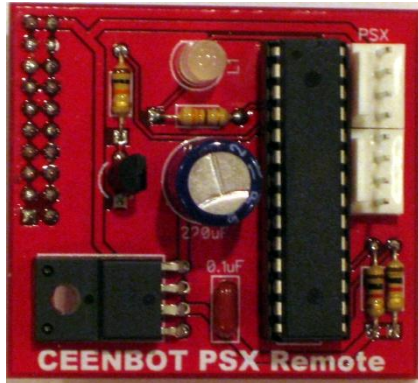


Playstation Controller

Warning! This board has components on both sides.



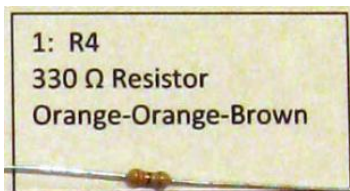
1. Solder resistors R1 and R2



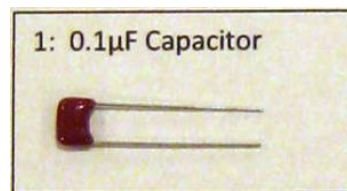
2. Solder resistor R3



3. Solder resistor R4



4. Solder the 0.1μF capacitor. Orientation does not matter.



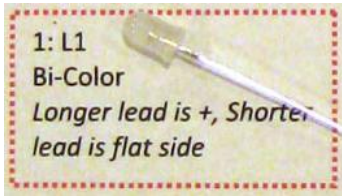
5. Place the 033EF 3.3 volt regulator



6. Solder the C5019 transistor



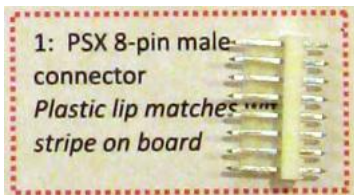
7. Solder L1 LED. The shorter lead goes next to the flat side silk screen marking



8. ATMEGA 28 pin DIP socket. Match the "U" indentation on the socket with the "U" marking on the silk screen.



9. Solder the 8 pin male connector. The plastic lip aligns with the white strip on the silk screen



10. Solder the 220 μ F capacitor. The long lead aligns with the + on the silk screen.



§§§§§§§§§§§§

11. **WARNING!** This component is placed on the back side of the board. 20 pin female socket.



§§§§§§§§§§§§

12. **Do not solder.** When the board is completed, place the ATMEGA 48 into its socket.

